



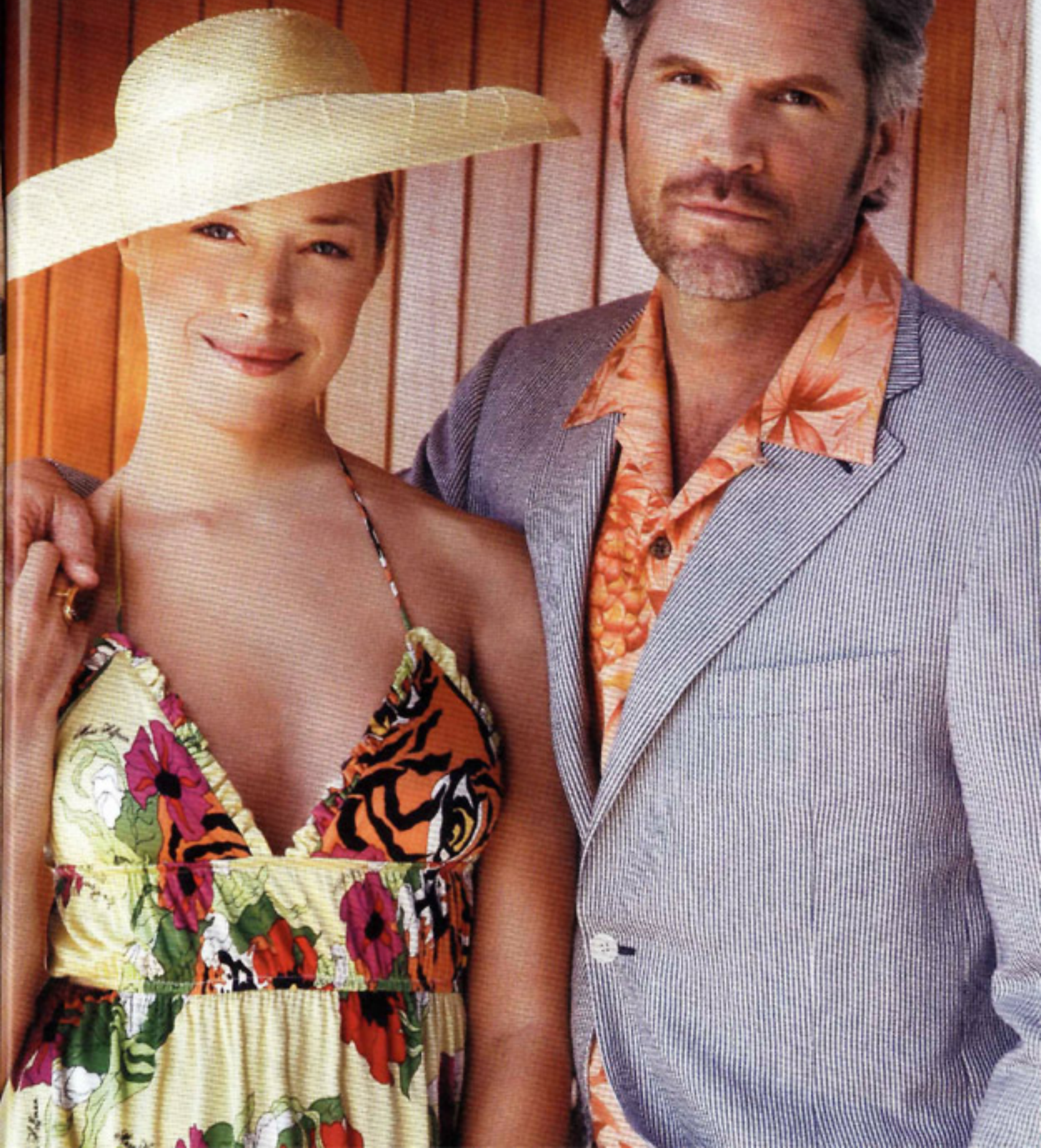
Beth and Brad are on board for a high seas getaway. He wears a linen jacket from Southwick over linen pants and sweater by Brioni, topped by Kelly Christy's straw Belmont hat. She sports a corded, two-piece Katama suit and Harbor Hoody sweater from Vineyard Vines and a Moritz Glik diamond ring in white gold.

# SHIP SHAPE

ALL HANDS ARE ON DECK FOR A STYLISH SEA CRUISE ABOARD HOLLAND AMERICA'S BRAND NEW MS NOORDAM. SPRING'S SPRIGHTLY FASHION PROVIDES THE PERFECT PALETTE ON A NAUTICAL BACKDROP. PHOTOGRAPHS BY PATRIK ANDERSSON

STYLING: AMIT CAJWANI FOR ARTISTBYTIMOTHYPRIANO.COM  
HAIR: LUCA BLANDI FOR OSCARBLANDI.COM  
MAKEUP/GROOMING: LISA GARNER FOR SHEER COVER  
MODELS: BETH KALTMAN AND BRAD FISHER FOR FORD

Beth and Brad regroup in the Noordam's penthouse suite. He wears a Canali seersucker jacket, bermuda sailing shorts and Cintura Broderick belt by Loro Piana, and Tommy Bahama Oahu shirt. She's in a Mary Hoffman dress, topped by a Kelly Christy hat, with a citrine-and-diamond ring by Moritz Glik.





No regrets at voyage's end for Brad, wearing a cashmere sweater by Lochcarron for the British Apparel Collection and the High Horse II felt hat from Kelly Christy.